



# Beaumont Drive

Cherry Lodge, Northampton

oriordanbond  
SALES & LETTINGS



## Beaumont Drive

Cherry Lodge

NN3 8PS

GUIDE PRICE £250,000

A modern three bedroom semi-detached property, situated in a cul-de-sac, within the popular Cherry Lodge area. The property provides good access to Weston Favell Shopping Centre and local schools.

The accommodation comprises sitting room and a modern fitted kitchen/dining room. To the first floor are three bedrooms and a modern family bathroom. Outside is an enclosed rear garden with lawn and patio areas and to the front is a block paved driveway providing off road parking. Further benefits include gas radiator heating and uPVC double glazing. (B/626/M)

### Additional information

- Council Tax Band: B
- Energy Efficiency Rating: D

### Viewing

Viewing strictly by appointment – details below

### Disclaimer

O'Riordan Bond Estate Agents Limited has not tested apparatus, equipment, fittings or services and so cannot verify they are in working order. The buyer is advised to obtain verification from their solicitor or surveyor.

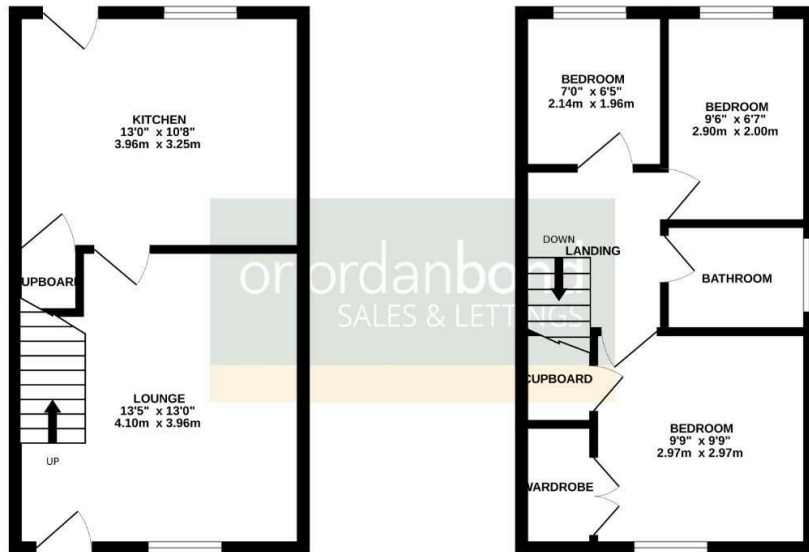
O'Riordan Bond Weston Favell Sales  
01604 784007

westonfavell@oriordanbond.co.uk



GROUND FLOOR

1ST FLOOR



TOTAL FLOOR AREA : 626 sq.ft. (58.2 sq.m.) approx.

Whilst every attempt has been made to ensure the accuracy of the floorplan contained here, measurements of doors, windows, rooms and any other items are approximate and no responsibility is taken for any error, omission or mis-measurement. This plan is for illustrative purposes only and should be used as such by any prospective purchaser. The services, systems and appliances shown have not been tested and no guarantee as to their operability or efficiency can be given.  
Made with Metropix 02025